

# Sustainable Groundwater Management Program

Ventura County



November 15, 2017

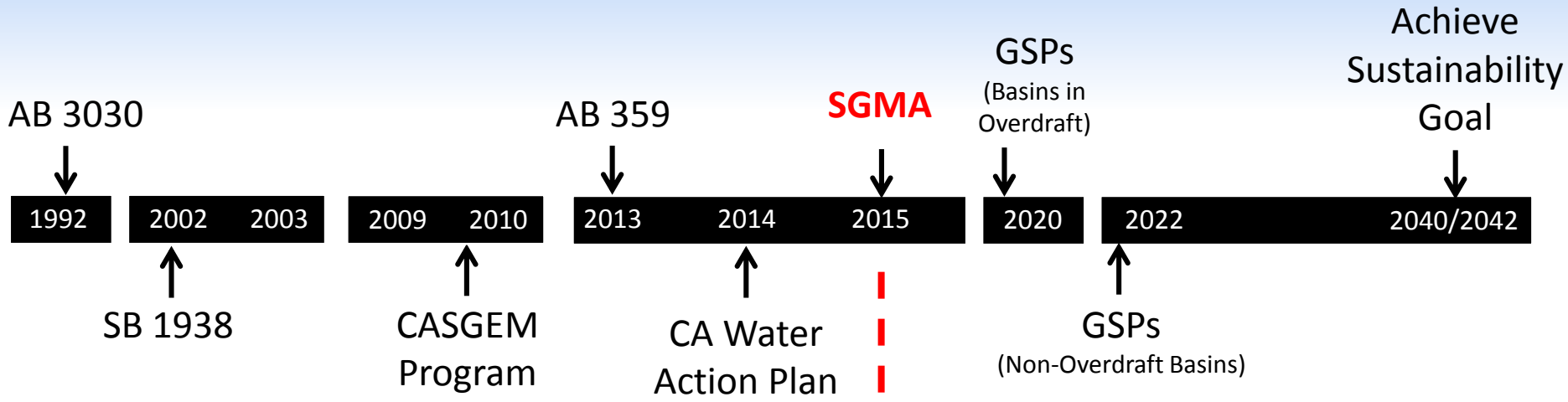
Department of Water Resources

# Presentation Overview

- 1. SGMA Overview**
- 2. Groundwater Sustainability Agency (GSA) Formation**
- 3. Groundwater Sustainability Plan (GSP) Requirements**
- 4. Planning and Technical Assistance**

# SGMA Overview

# California's Major Groundwater Milestones



## Voluntary Groundwater Management (Non-Regulatory)

- Service Area Planning
- Variable Levels of Implementation
- Variable Authority
- Grant Incentives

## Required Groundwater Management (Regulatory)

- Entire Basin Planning
- Required Implementation
- New GSA Authorities
- State Backstop (SWRCB)

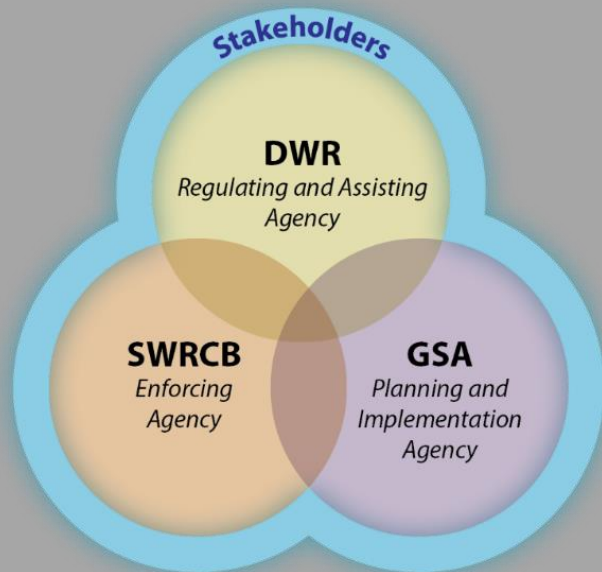
# SGMA Overview

## Local Control



*“A central feature of these bills is the recognition that groundwater management in California is best accomplished locally.”*

Governor Jerry Brown, September 2014



## Sustainability

*Avoid Six Undesirable Results*



Lowering  
GW Levels



Reduction  
of Storage



Seawater  
Intrusion



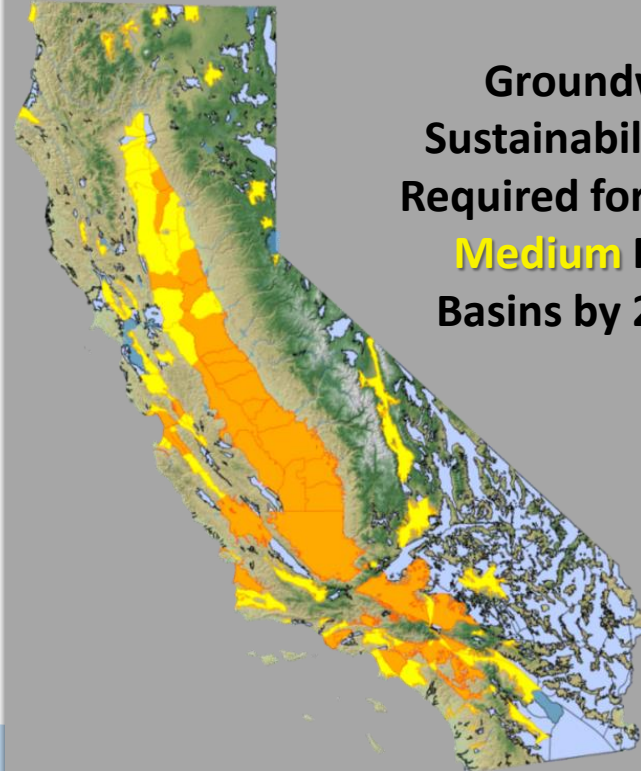
Degraded  
Quality



Land  
Subsidence

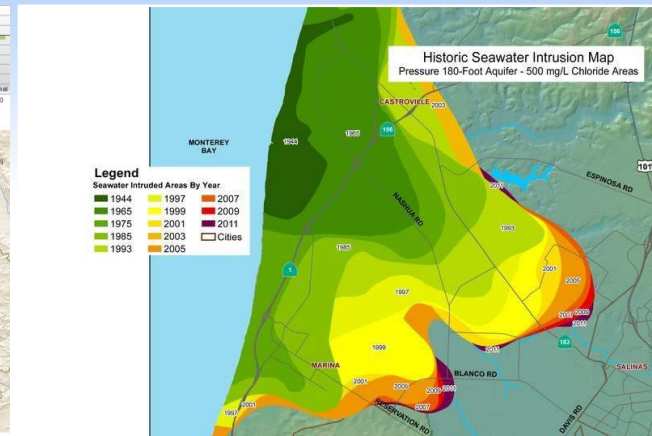
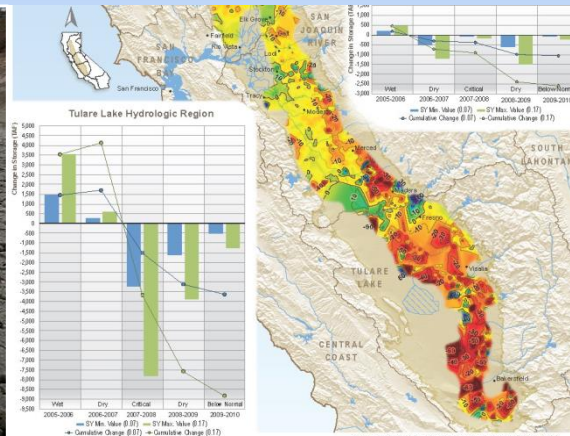


Surface Water  
Depletion



**Groundwater  
Sustainability Plans  
Required for High and  
Medium Priority  
Basins by 2020/22**

# Achieving Sustainable Yield and Avoidance of Undesirable Results



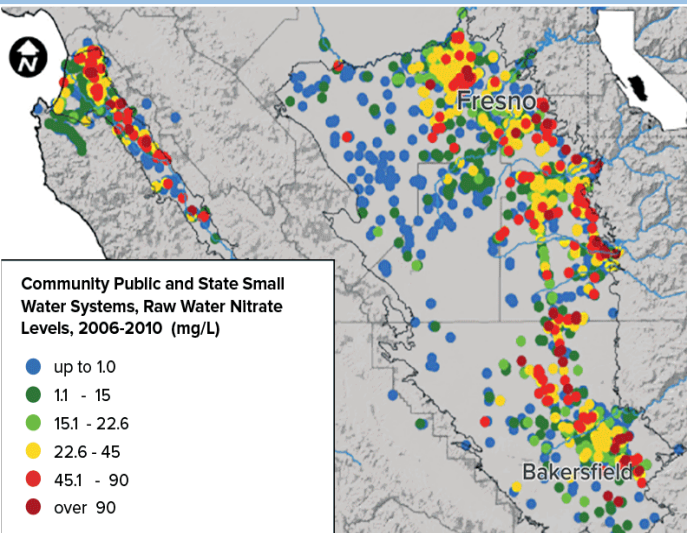
**Lowering of GW Levels**



**Reduction of GW Storage**



**Seawater Intrusion**



**Water Quality Degradation**

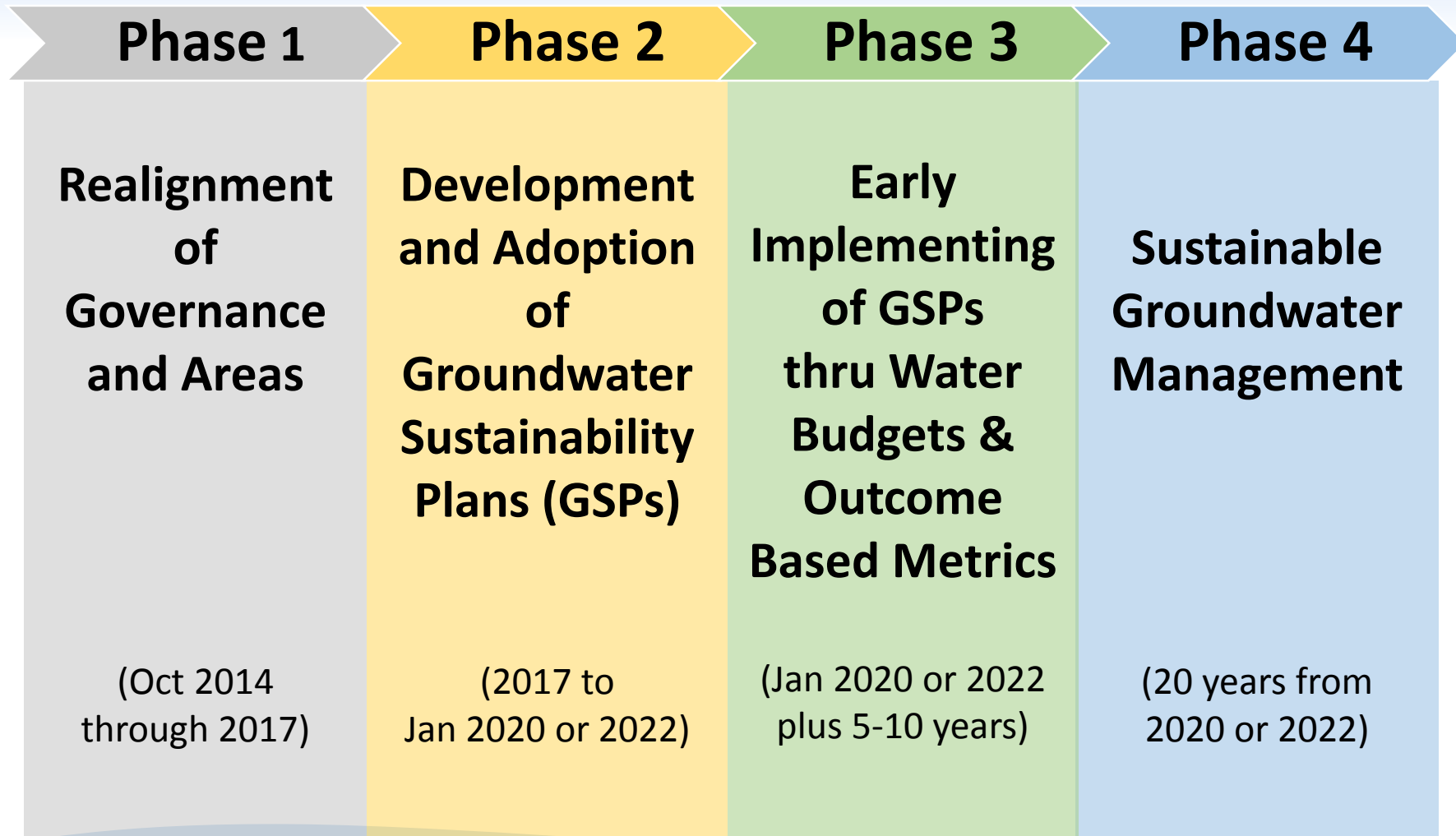


**Land Subsidence**



**Depletion of Interconnected Streams**

# Phases to Implement SGMA and Achieve Sustainable Groundwater Management



# DWR's Role

*“A central feature of SGMA is the recognition that groundwater management in California is best accomplished locally.”*

Governor Jerry Brown, September 2014



## Financial Assistance

*- Proposition 1*

## Planning Assistance

*- Facilitation*

*- GSA/Governance Support*

## Technical Assistance

*- Statewide Datasets, Analysis, and Tools*

*- Best Management Practices*

*- Water Available for Replenishment Report*

**Facilitation/Advisory Role**

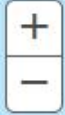
## Evaluation of GSPs

**Evaluation/Regulatory Role**

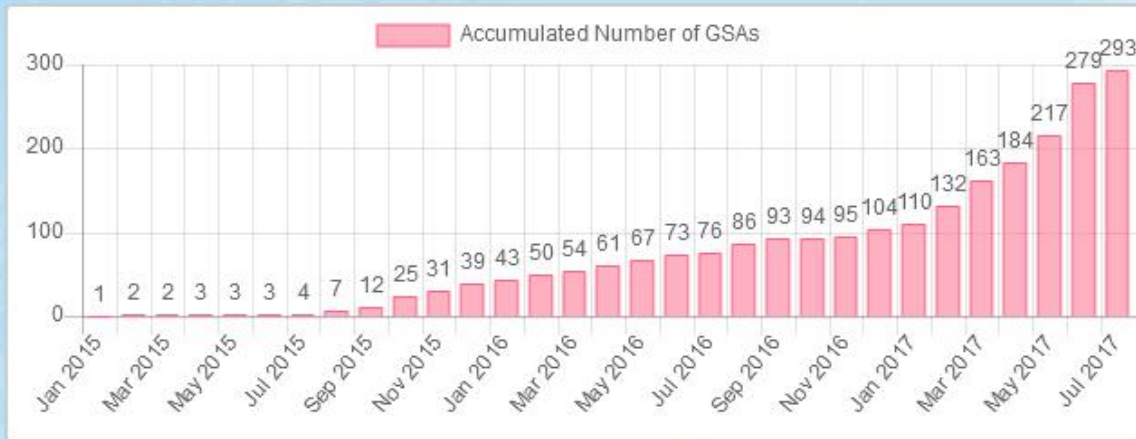


# GSA Formation

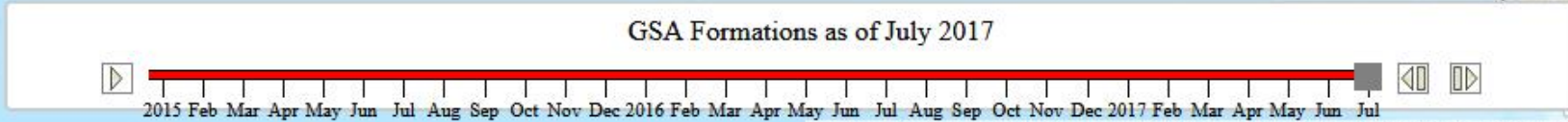
# GSA Formation Summary



## GSA Formations



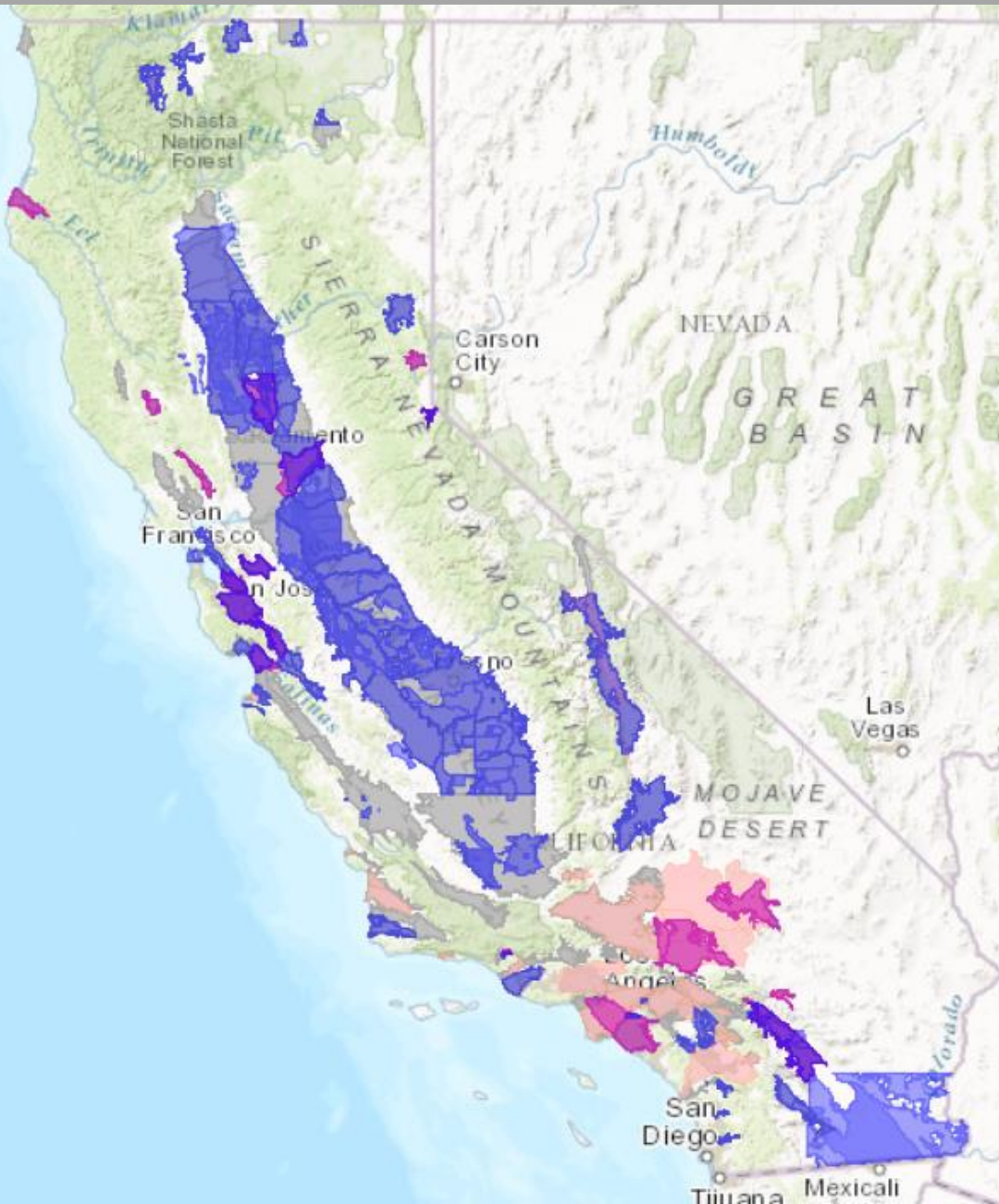
GSA Formations as of July 2017



# Summary

**Layers** ✕

- GSA\_Notice Submitted  
◀ —▶ ☰
- Alternatives Submitted  
◀ —▶ ☰
- Bulletin 118 Changed Areas (2003/2016)
- Exclusive Local Agencies (Water\_Code\_§10723)
- Adjudicated Areas  
◀ —▶ ☰
- Adjudicated Region
- Counties  
◀ —▶ ☰
- County Boundary
- Bulletin 118 Groundwater Basins (2016)
- CASGEM Basin Priorities High/Medium Only  
◀ —▶ ☰



# GSP Requirements

# GSP Requirements = SGMA Statutes + GSP Regulation

(SB 1168 + AB1739 +  
SB1319 + SB 13)

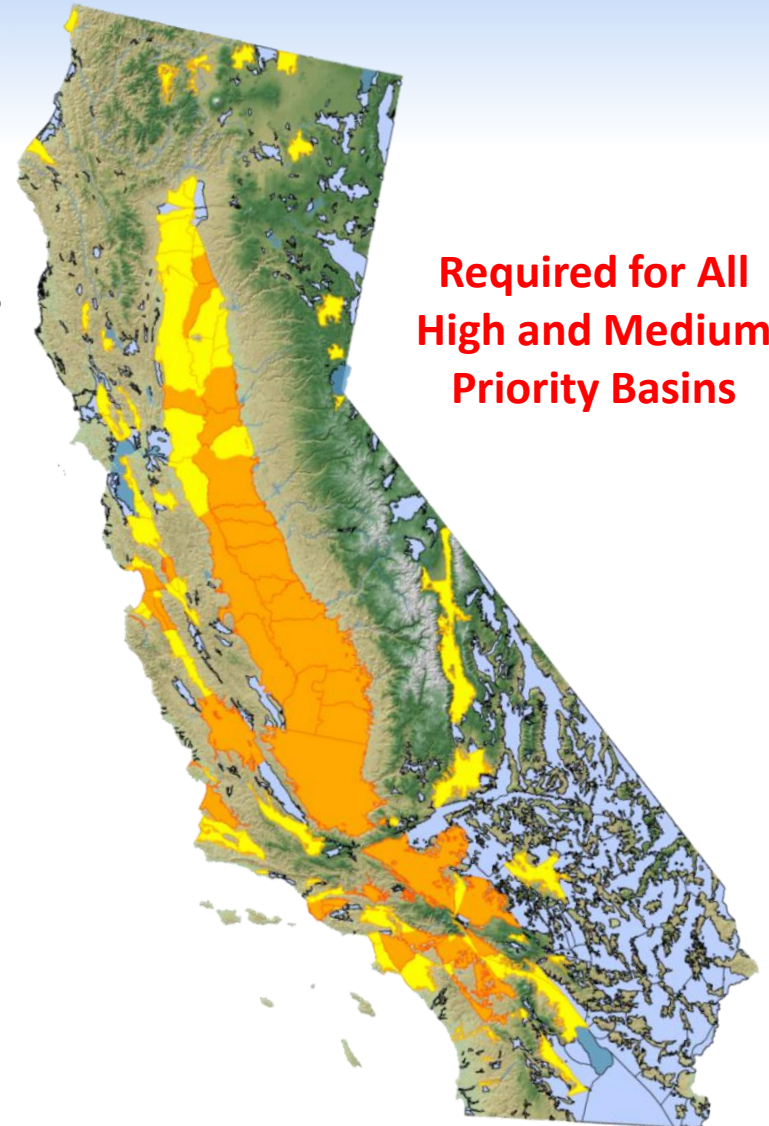


GSP Regulations  
(§350 – 358.4)



# GSP Regulation Articles

1. **Introductory Provisions**
2. **Definitions**
3. **Technical & Reporting Standards**
4. **Procedures**
5. **Plan Contents**
6. **Department Evaluation & Assessment**
7. **Annual Reports and Periodic Evaluations by the Agency**
8. **Interagency Agreements**
9. **Alternatives**



**Required for All  
High and Medium  
Priority Basins**

# Article 5. Plan Contents

## 1. Administrative Information

- § 354.4. General Information
- § 354.6. Agency Information
- § 354.8. Description of Plan Area
- § 354.10. Notice & Communication

## 2. Basin Setting

- § 354.14. Hydrogeologic Conceptual Model
- § 354.16. Groundwater Conditions
- § 354.18. Water Budget
- § 354.20. Management Areas

## 3. Sustainable Management Criteria

- § 354.24. Sustainability Goal
- § 354.26. Undesirable Results
- § 354.28. Minimum Thresholds
- § 354.30. Measureable Objectives

## 4. Monitoring Networks

- § 354.34. Monitoring Network
- § 354.36. Representative Monitoring
- § 354.38. Assessment & Improvement
- § 354.40. Reporting Monitoring Data to the Department

## 5. Projects and Management Actions

- § 354.44. Projects & Management Actions

### Undesirable Results

*Significant and Unreasonable*



Lowering  
GW Levels



Reduction  
of Storage



Seawater  
Intrusion



Degraded  
Quality



Land  
Subsidence

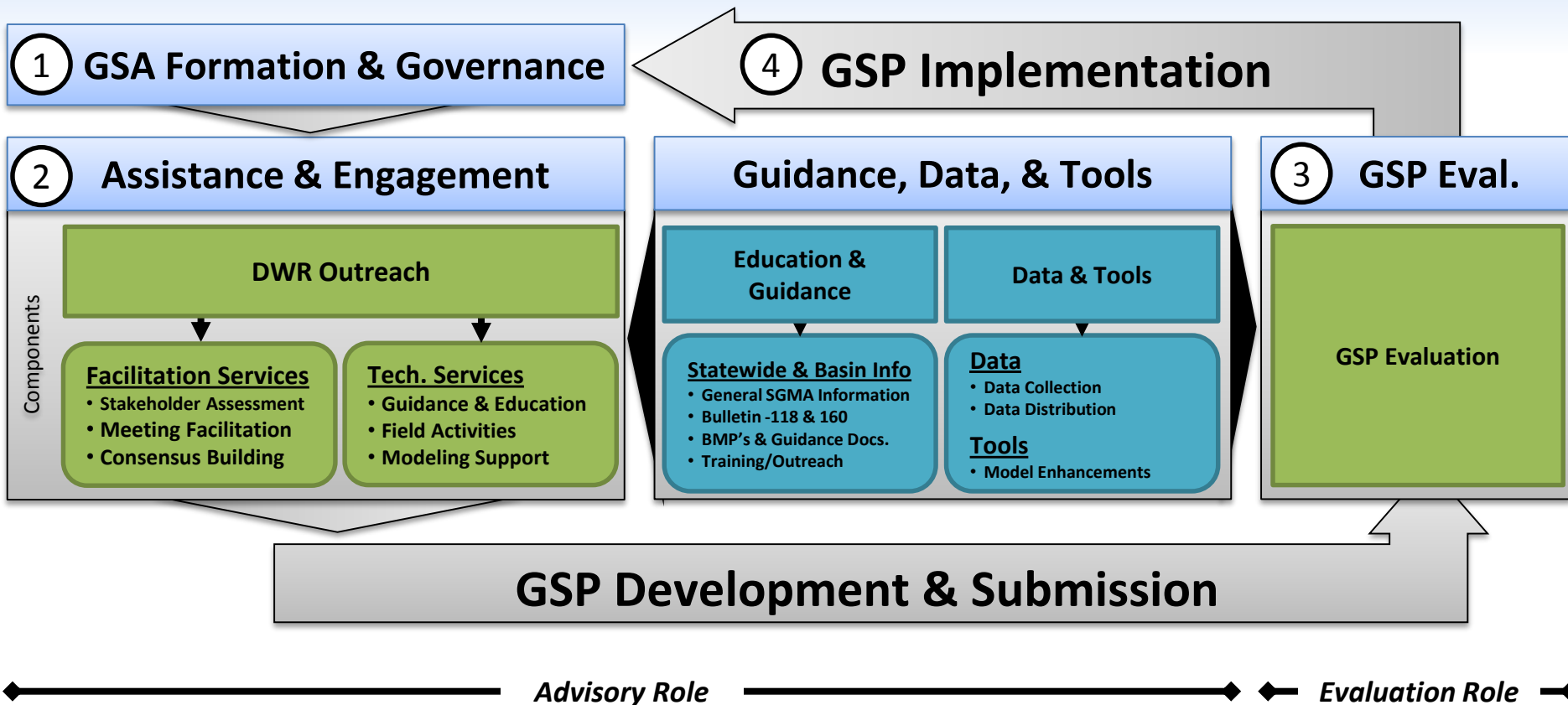


Surface Water  
Depletion

# Planning and Technical Assistance



# SGM Program Implementation

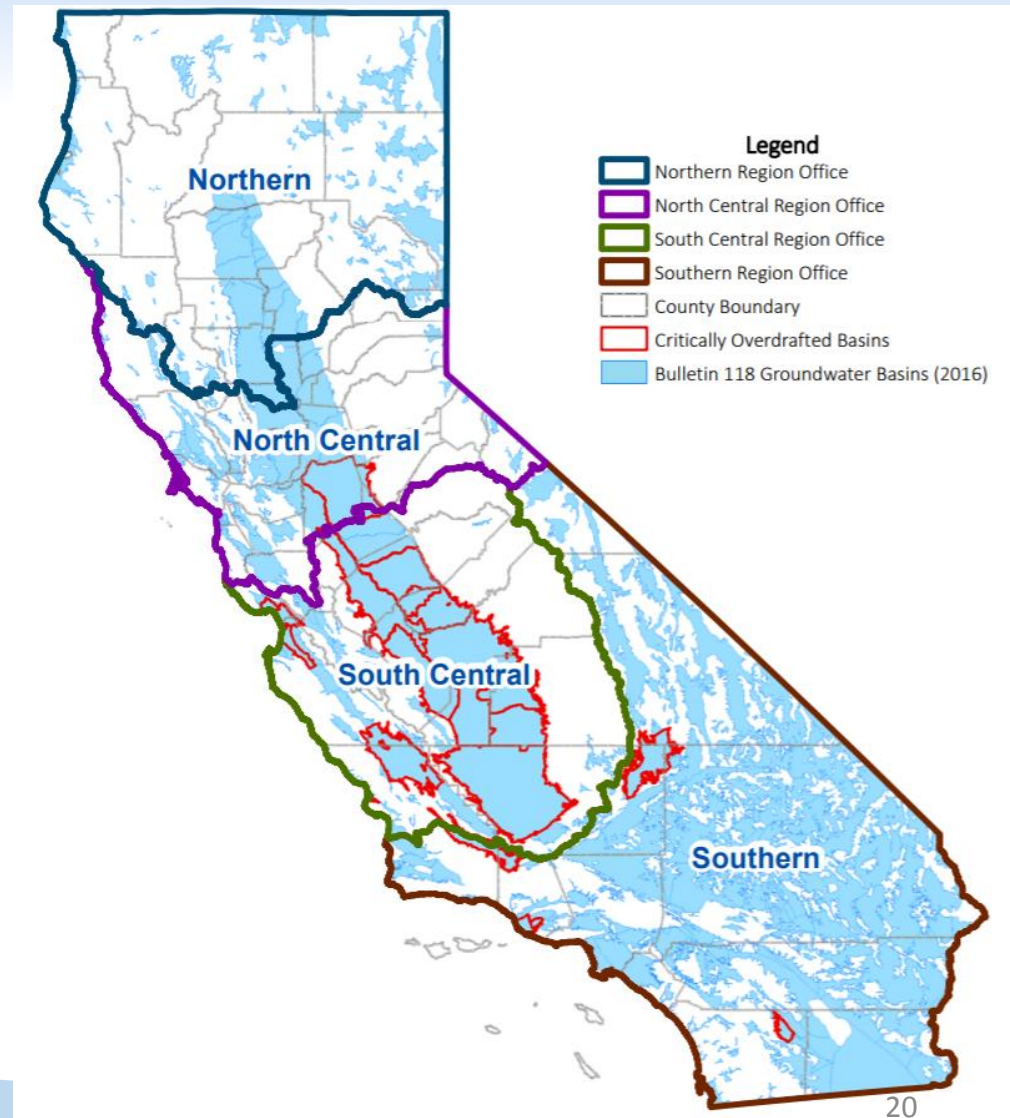


# Assistance & Engagement

## - Facilitation Support Services (FSS) -

### Services Offered through DWR funded Professional Facilitators

- Stakeholder identification and engagement
- Meeting facilitation
- Interest-based negotiation/consensus building
- Public outreach facilitation

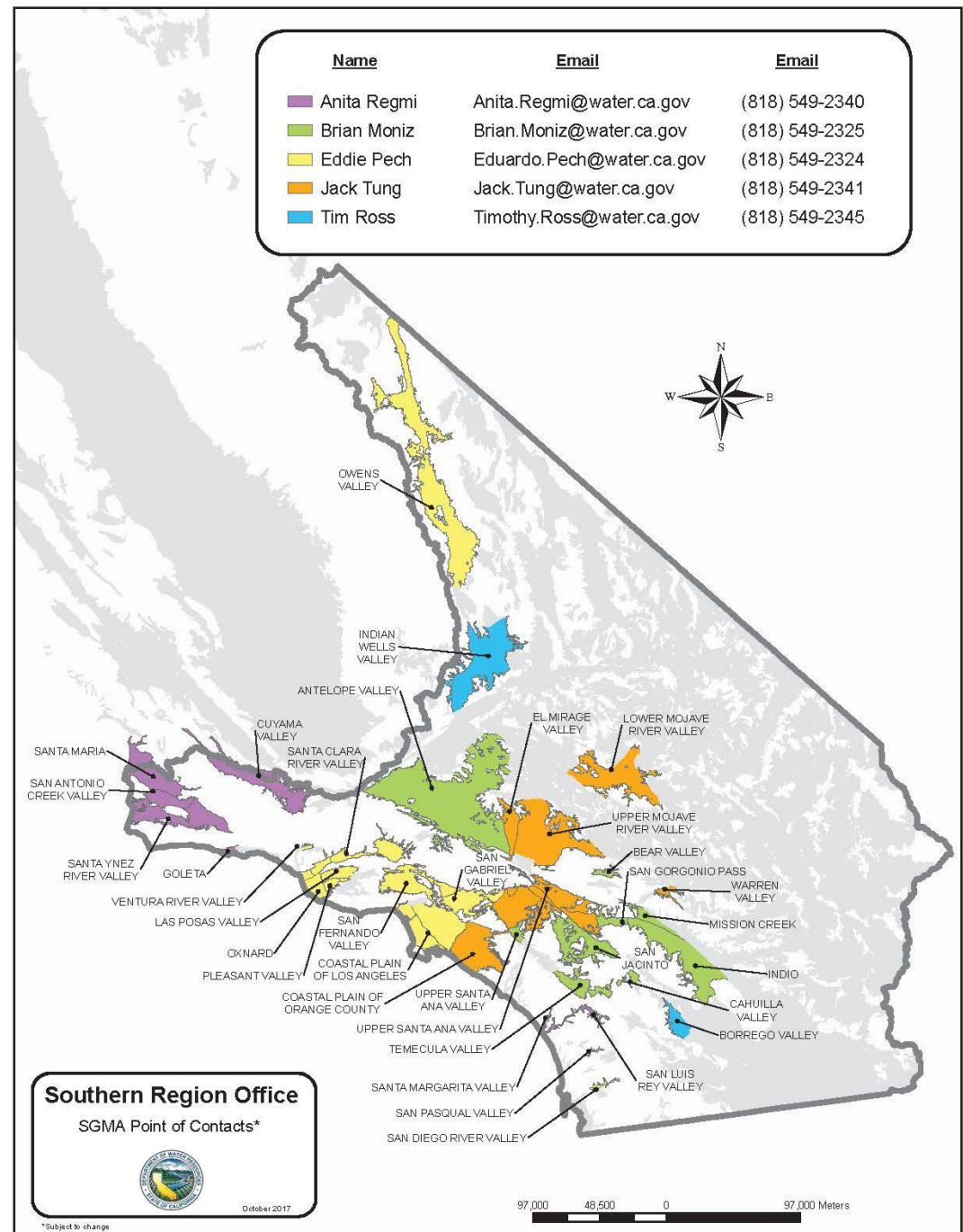


# Assistance and Engagement

## Engagement –

### Development of GSPs

- DWR regional office point of contacts (POCs) by basin
- Basin specific meetings



# FSS Resources

## 1. DWR FSS Website

[http://www.water.ca.gov/groundwater/sgm/facilitation\\_services.cfm](http://www.water.ca.gov/groundwater/sgm/facilitation_services.cfm)

**Facilitation Support Services**

Department of Water Resources' (DWR) Facilitation Support Services (FSS) aim to help local agencies work through challenging water management situations. Professional facilitators are sometimes needed to help foster discussions among diverse water management interests and local agencies as they strive to implement the Sustainable Groundwater Management Act (SGMA). From April 2015 to June 2017, DWR's FSS resources were primarily allocated to assist with Groundwater Sustainability Agency (GSA) formation. Beginning July 1, 2017, DWR will be focusing its available FSS resources on supporting the development of Groundwater Sustainability Plans (GSPs). Under the requirements of SGMA, all beneficial uses and users of groundwater must be considered in the development of GSPs, and GSAs must encourage the active involvement of diverse social, cultural, and economic element of the population.

The goal of the FSS related to GSP development is to assist GSAs in reaching consensus on potentially contentious water management topics arising from the diverse beneficial uses and users of groundwater. Priorities of this funding are given to the critically overdrafted basins.

**Services Offered through DWR funded Professional Facilitators**

- Stakeholder identification and engagement
- Meeting facilitation
- Interest-based negotiation/consensus building
- Public outreach facilitation

**Who is Eligible?**

GSAs developing GSPs, or other groups coordinating with the GSAs in developing GSPs, are eligible to apply for FSS if they meet all of the following obligations:

- Agree to work in an open, inclusive, and collaborative manner toward the development of a GSP.
- Support an inclusive process that seeks, promotes, encourages, and welcomes the involvement of all stakeholders and interested parties.
- Commit to meet regularly and work diligently toward a clear and defined goal.
- Commit to providing a meeting space that is suitably located and sized.

Applications for FSS will be evaluated on a continuous basis as funding allows. Applications must be submitted through the online application system. [Link to the Online Application System](#)

**GROUNDWATER HOME**

**SUSTAINABLE GROUNDWATER MANAGEMENT**

- Adjudicated Basin Reporting
- Alternative Submittals
- Basin Boundary Modifications
  - BBAT - Basin Boundary Assessment Tool
  - BBMRS - Basin Boundary Modification Request System
- Best Management Practices
- Critically Overdrafted Basins
- Communication and Outreach
  - Advisory Groups
  - Calendar
  - Subscribe for Email Updates
- Groundwater Sustainability Agencies
  - GSA Notices and Map
  - Withdrawals and Opt-Out Notices
- Groundwater Sustainability Plan Regulations
  - Initial Notifications
- Initial Basin Prioritization
- Water Available For Replenishment
  - WAFR Public Comments
- Resources
  - Water Mgmt. Planning Tool

## 2. FSS Application Portal

[https://www.surveymonkey.com/r/FSS\\_application01](https://www.surveymonkey.com/r/FSS_application01)

**Department of Water Resources**  
Facilitation Support Services Application  
Groundwater Sustainability Plan (GSP) Development

**I. Applicant Background**  
*(Questions 1-6 of 17)*

The Department of Water Resources is offering facilitation support services to help GSAs and local water management groups foster discussions among diverse water management interests and jurisdictions in support of developing Groundwater Sustainability Plans.

For questions or assistance with this online application, please contact Simar Dhanota at [Simarjit.Dhanota@water.ca.gov](mailto:Simarjit.Dhanota@water.ca.gov) or (916) 651-0889.

**\* 1) Applicant Information**

Applicant Name:

Point of Contact:

Phone Number:

Email Address:

**\* 2) For which groundwater basin/subbasin is the applicant applying for facilitation services?**

# Assistance & Engagement - Technical Support Services (TSS) -

- Guidance and Education
- Field Activities

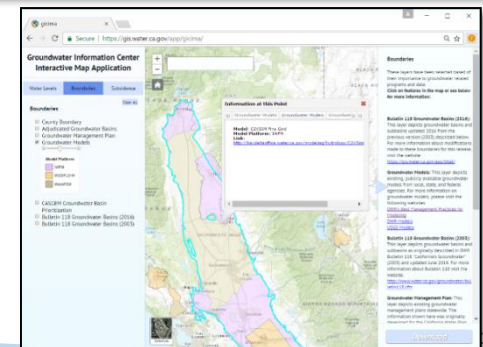
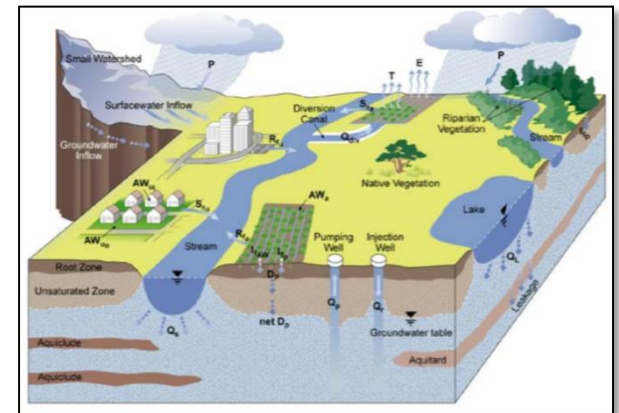
- Groundwater Level Training
- Well Video Logging
- Geophysical Logging
- Monitoring Well Installation

- Modeling and Tools

- Modeling Questions
- Training

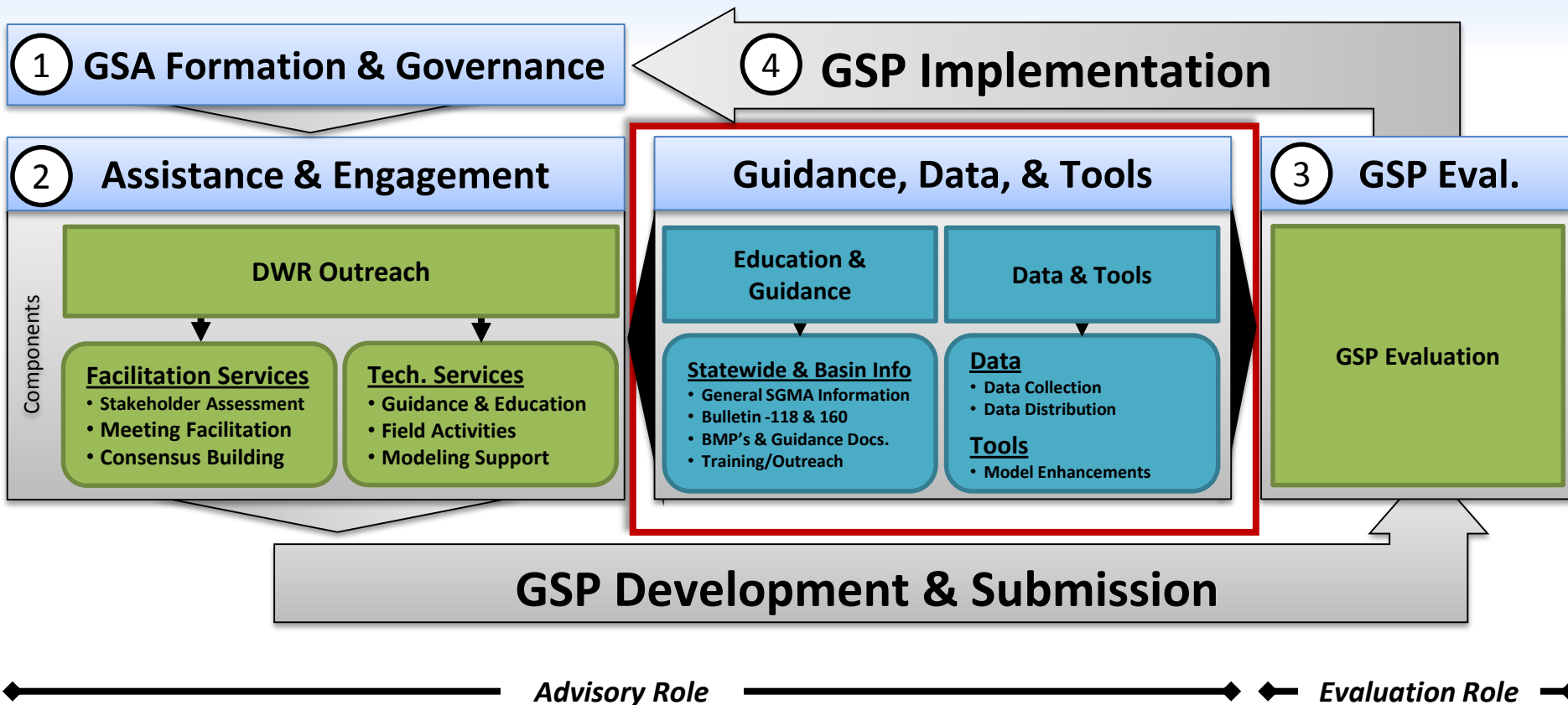
➤ IWFM and IDC Workshops – Sep/Oct 2017

➤ <http://cwemf.org>



<https://gis.water.ca.gov/app/gicima/>

# SGM Program Implementation



# Education and Guidance

- Statewide & Regional References
  - DWR's SGMA Webpages
  - Bulletin 118
  - Bulletin 160 – GW Content
- SGMA References
  - Water Available for Replenishment



## Best Management Practices

- BMP 1: Monitoring Protocols, Standards, Sites
- BMP 2: Monitoring Networks and Identification of Data Gaps
- BMP 3: Hydrologic Conceptual Model
- BMP 4: Water Budget
- BMP 5: Modeling
- **BMP 6: Sustainable Management Criteria**

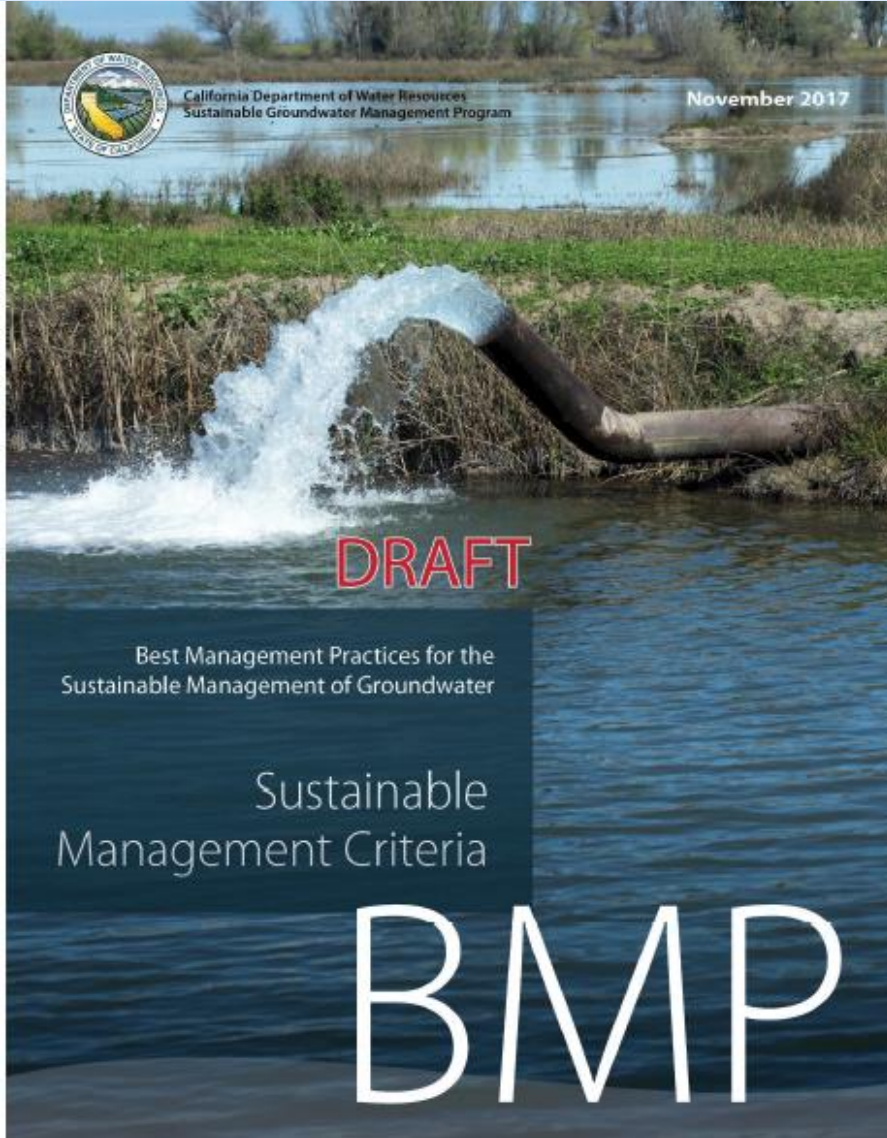
## Guidance Documents

- Preparation Checklist for GSP submittal
- GSP Annotated Outline
- Engagement with Tribal Governments
- Stakeholder Comm. & Engagement

## Future BMP(s) ??

- Water Quality
- Data Management System
- Surface Water/Groundwater Interaction

# Sustainable Management Criteria (SMC) – Draft BMP



- SMC include:
  - Sustainability Goal
  - Undesirable Results
  - Minimum Thresholds
  - Measurable Objectives
- Public Meetings Planned
  - December 11 – Bakersfield
  - December 12 – Orange Co.
  - December 14 – Sacramento
- Public Comment Period Closes January 8, 2018



# Data and Tools

## New Data, Tools, and Reports Webpage

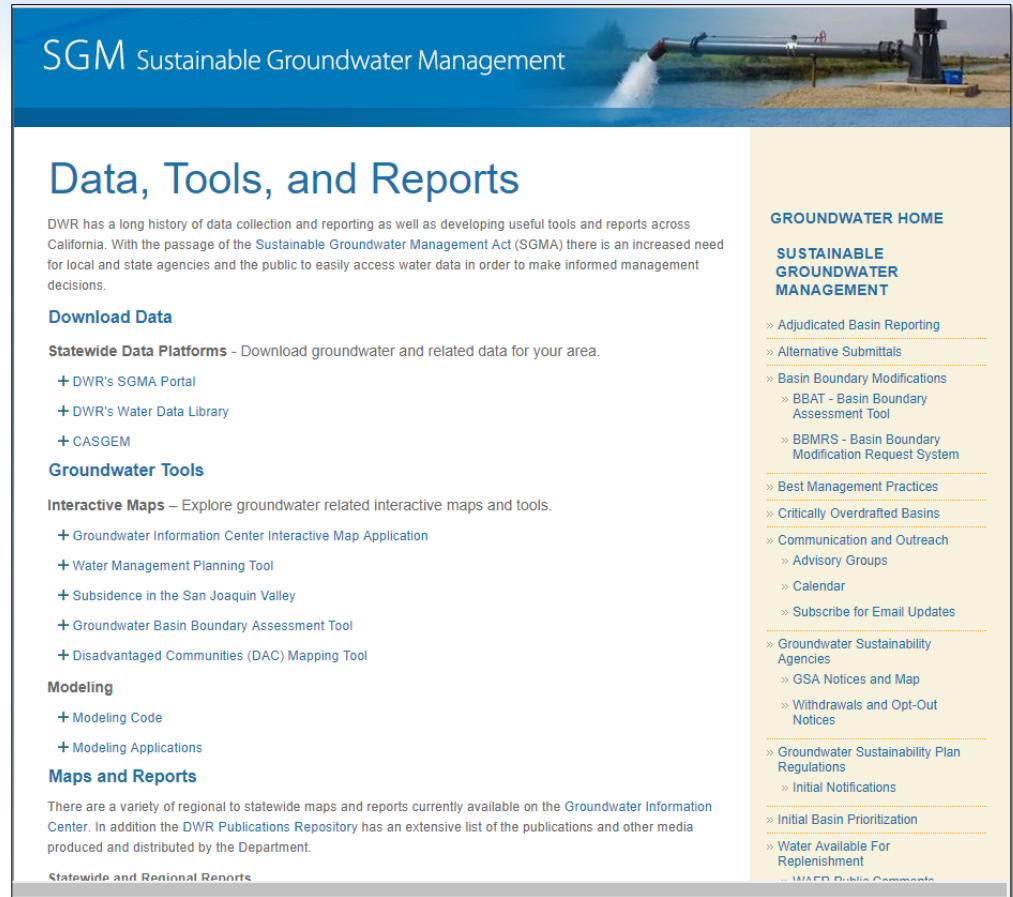
### 1. Download Data

### 2. Groundwater Tools

#### 1. Interactive Maps

#### 2. Modeling Tools

### 4. Maps and Reports



The screenshot shows the 'Data, Tools, and Reports' page of the Sustainable Groundwater Management (SGM) website. The page features a blue header with the SGM logo and a photograph of a water pipe. The main content area is white and contains several sections: 'Download Data' with links to the SGMA Portal, Water Data Library, and CASGEM; 'Groundwater Tools' with links to interactive maps and planning tools; 'Modeling' with links to modeling code and applications; and 'Maps and Reports' with a description of regional maps and reports. A right-hand sidebar titled 'GROUNDWATER HOME' lists various management topics like adjudicated basins, boundary modifications, and sustainability plans.

**SGM Sustainable Groundwater Management**

## Data, Tools, and Reports

DWR has a long history of data collection and reporting as well as developing useful tools and reports across California. With the passage of the Sustainable Groundwater Management Act (SGMA) there is an increased need for local and state agencies and the public to easily access water data in order to make informed management decisions.

### Download Data

**Statewide Data Platforms** - Download groundwater and related data for your area.

- + DWR's SGMA Portal
- + DWR's Water Data Library
- + CASGEM

### Groundwater Tools

**Interactive Maps** – Explore groundwater related interactive maps and tools.

- + Groundwater Information Center Interactive Map Application
- + Water Management Planning Tool
- + Subsidence in the San Joaquin Valley
- + Groundwater Basin Boundary Assessment Tool
- + Disadvantaged Communities (DAC) Mapping Tool

### Modeling

- + Modeling Code
- + Modeling Applications

### Maps and Reports

There are a variety of regional to statewide maps and reports currently available on the Groundwater Information Center. In addition the DWR Publications Repository has an extensive list of the publications and other media produced and distributed by the Department.

**Statewide and Regional Reports**

### GROUNDWATER HOME

#### SUSTAINABLE GROUNDWATER MANAGEMENT

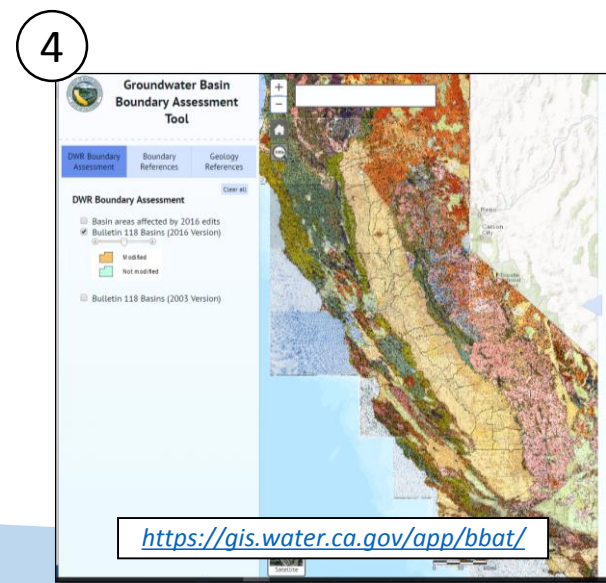
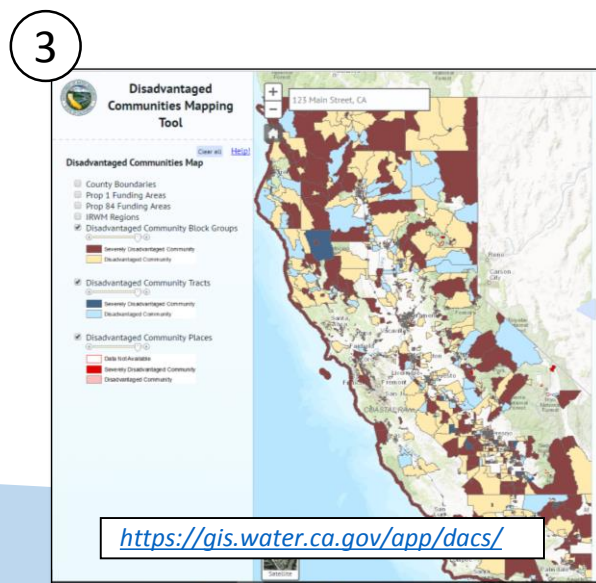
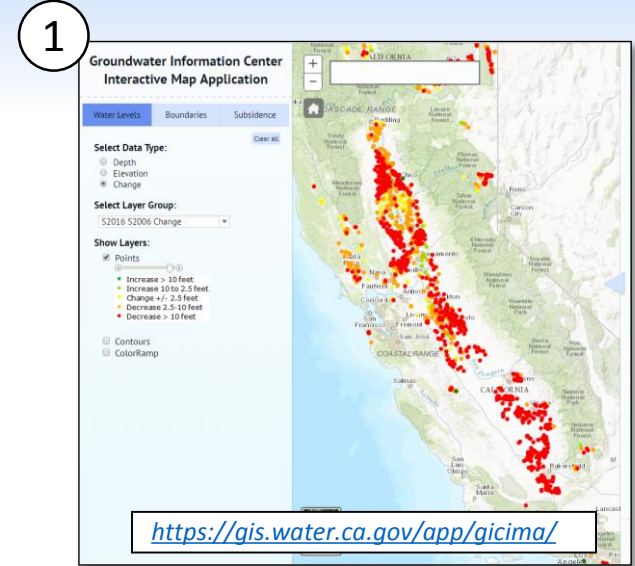
- » Adjudicated Basin Reporting
- » Alternative Submittals
- » Basin Boundary Modifications
  - » BBAT - Basin Boundary Assessment Tool
  - » BBMRS - Basin Boundary Modification Request System
- » Best Management Practices
- » Critically Overdrafted Basins
- » Communication and Outreach
  - » Advisory Groups
  - » Calendar
  - » Subscribe for Email Updates
- » Groundwater Sustainability Agencies
  - » GSA Notices and Map
  - » Withdrawals and Opt-Out Notices
- » Groundwater Sustainability Plan Regulations
  - » Initial Notifications
- » Initial Basin Prioritization
- » Water Available For Replenishment
  - » WAFR Public Comments

[http://www.water.ca.gov/groundwater/sgm/data\\_tools\\_reports.cfm](http://www.water.ca.gov/groundwater/sgm/data_tools_reports.cfm)

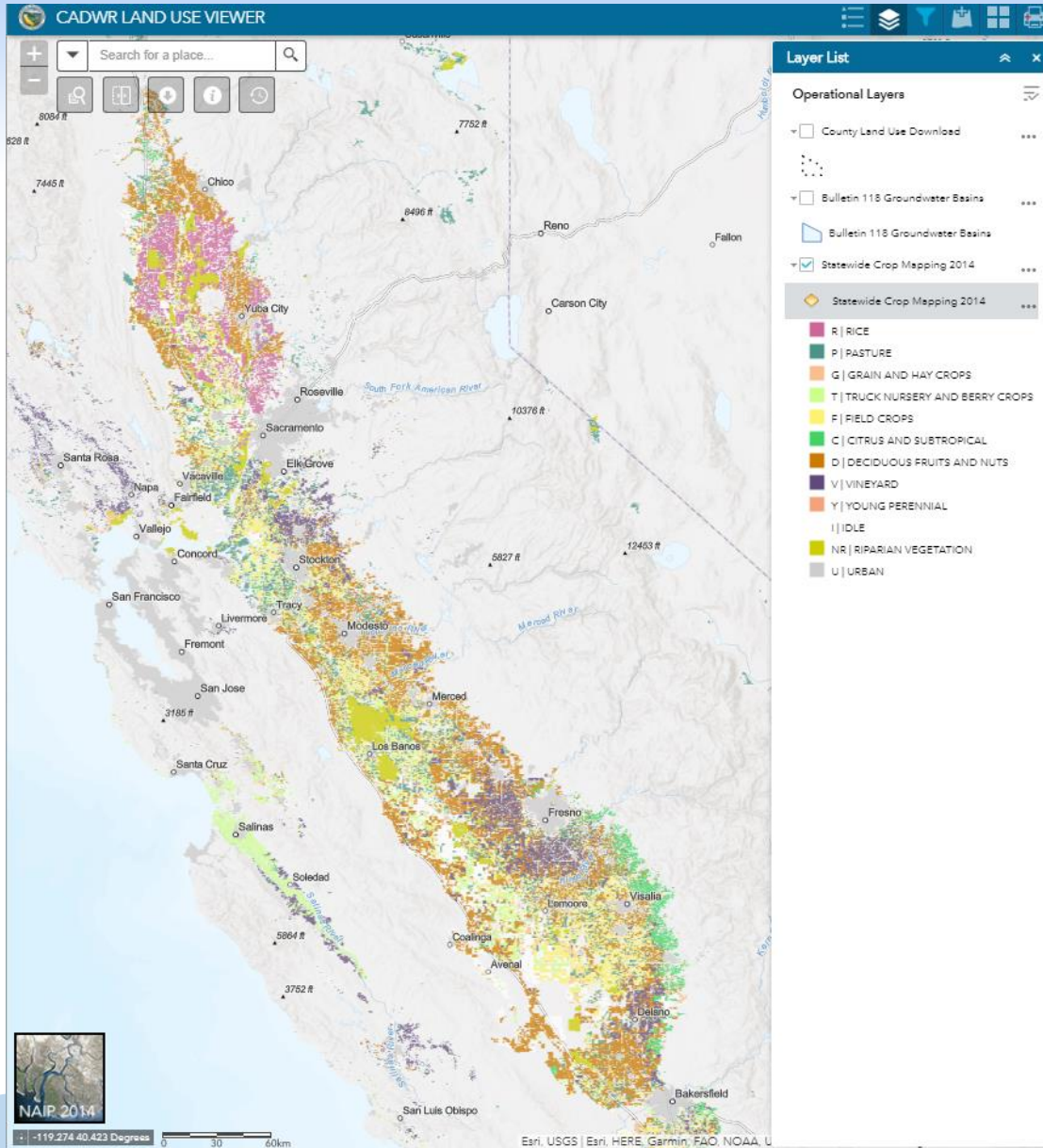
# Data & Tools

## Tools - Interactive Maps

1. Groundwater Information Center
  2. Water Management Planning Tool
  3. Disadvantaged Communities Tool
  4. Basin Boundary Tool
- More Tools will be added soon



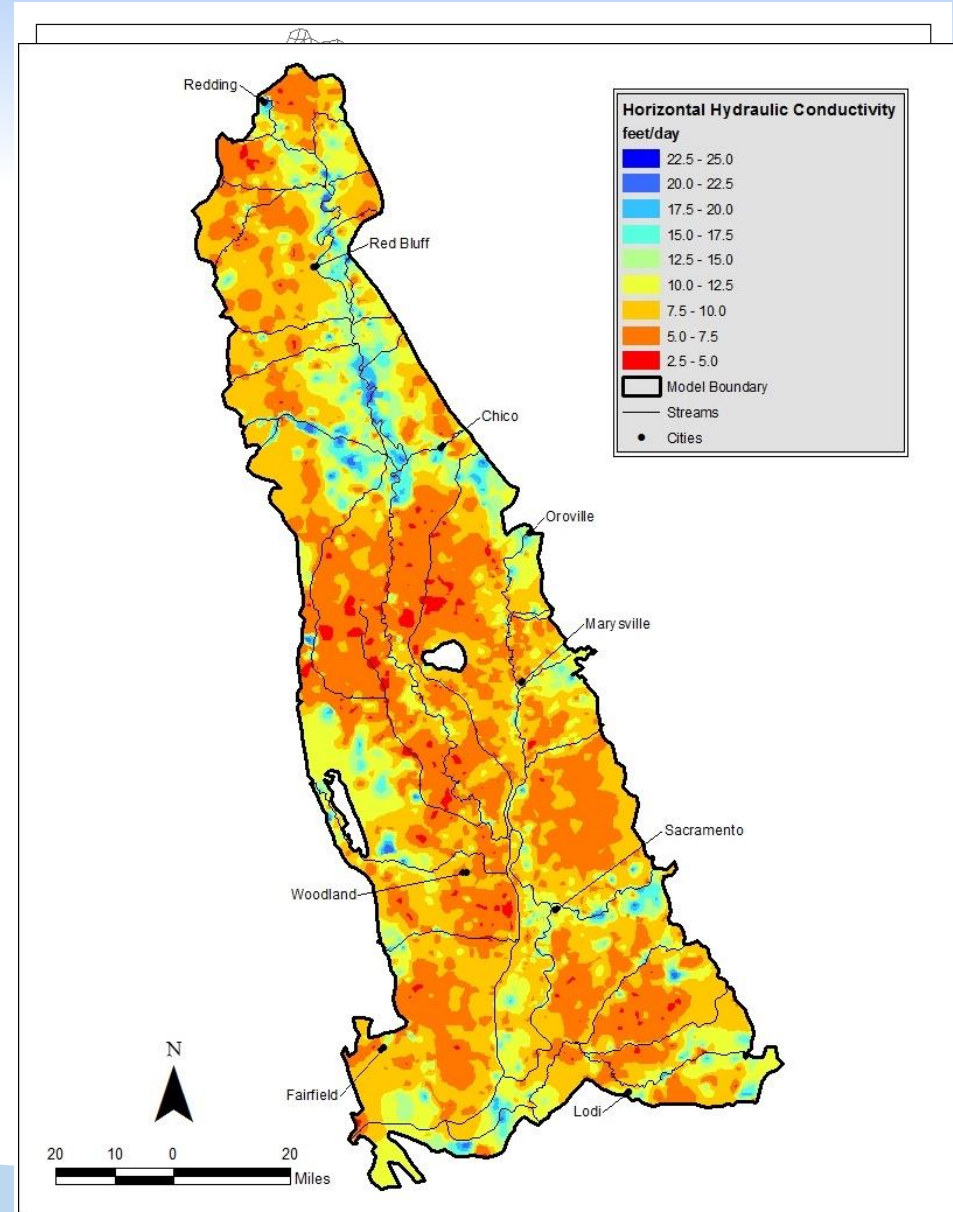
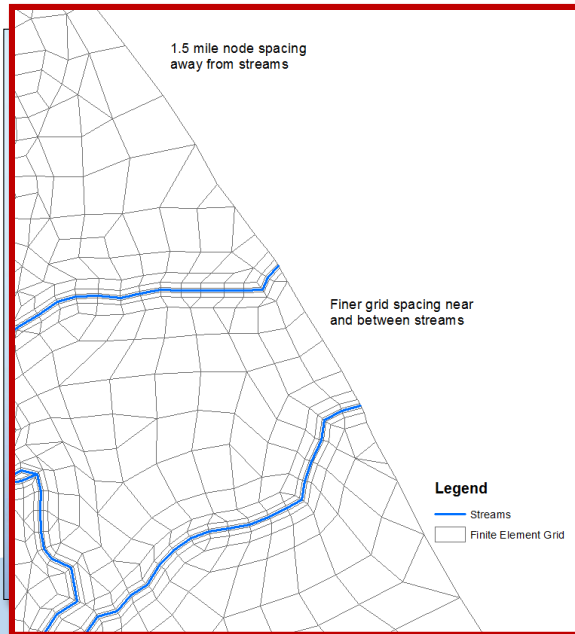
# DWR Land Use Viewer



# Data and Tools

## Tools – DWR Models

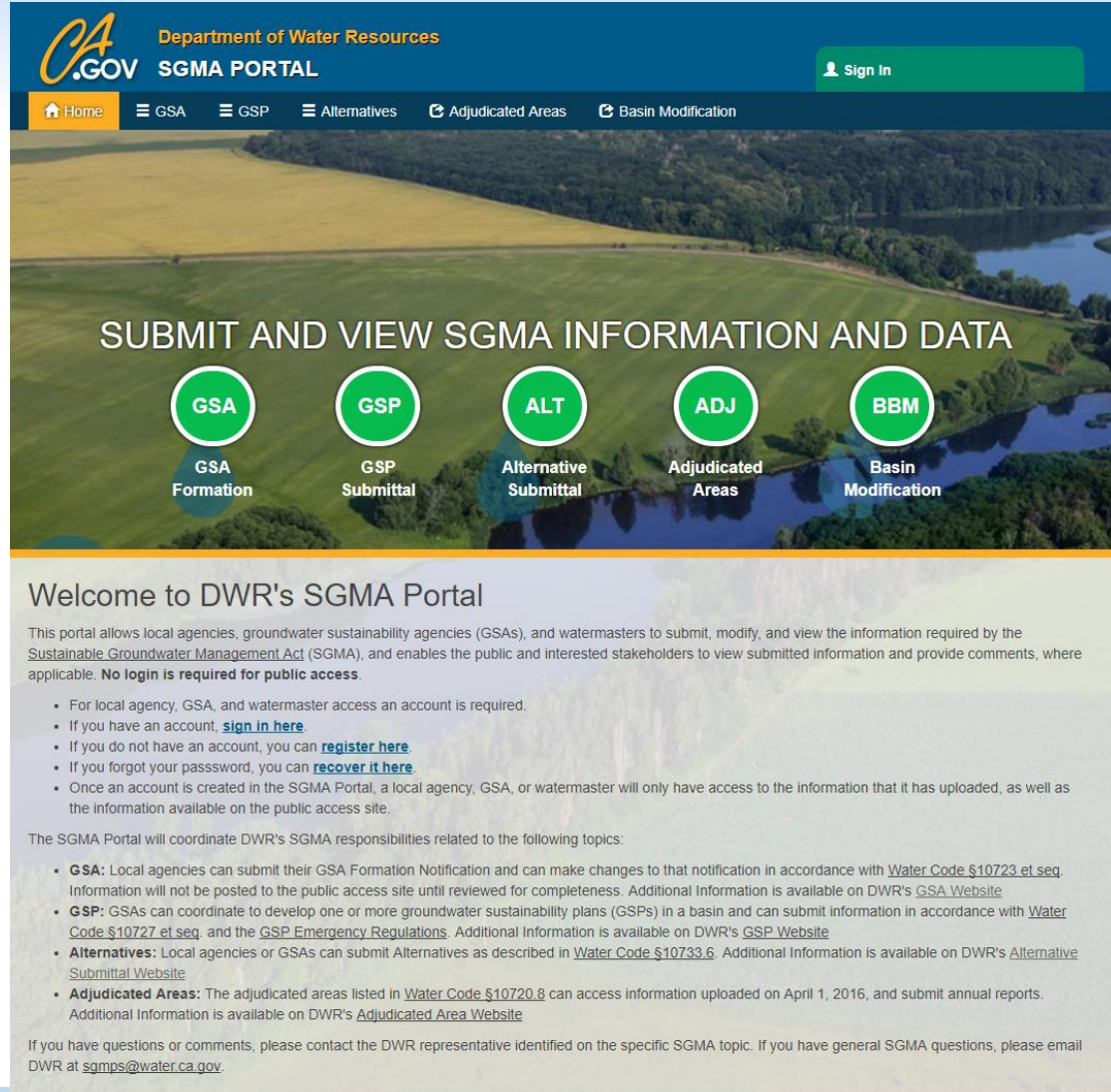
- C2VSim – Fine Grid (Q1 2018)
- SVSim – (Q1 2018)
- IWFM – (Currently Available)



# SGMA Portal

<http://sgma.water.ca.gov/portal/>

- Local agency and stakeholder accessible single interface
- Provides access to submittals under SGMA
- Provides additional opportunity to comment
- Look for future improvements



The screenshot shows the SGMA Portal website. At the top, there is a navigation bar with the CA.GOV logo, the text "Department of Water Resources SGMA PORTAL", and a "Sign In" button. Below the navigation bar is a main menu with links for Home, GSA, GSP, Alternatives, Adjudicated Areas, and Basin Modification. The main content area features a large green banner with the text "SUBMIT AND VIEW SGMA INFORMATION AND DATA" and five circular icons representing different SGMA processes: GSA Formation, GSP Submittal, Alternative Submittal, Adjudicated Areas, and Basin Modification. Below the banner, there is a "Welcome to DWR's SGMA Portal" section with a brief description of the portal's purpose and a list of links for account management. The bottom section provides detailed information about the portal's coordination with DWR's SGMA responsibilities, including links to various websites for more information.

Department of Water Resources  
SGMA PORTAL

Sign In

Home GSA GSP Alternatives Adjudicated Areas Basin Modification

SUBMIT AND VIEW SGMA INFORMATION AND DATA

GSA GSP ALT ADJ BBM  
GSA Formation GSP Submittal Alternative Submittal Adjudicated Areas Basin Modification

Welcome to DWR's SGMA Portal

This portal allows local agencies, groundwater sustainability agencies (GSAs), and watermasters to submit, modify, and view the information required by the Sustainable Groundwater Management Act (SGMA), and enables the public and interested stakeholders to view submitted information and provide comments, where applicable. **No login is required for public access.**

- For local agency, GSA, and watermaster access an account is required.
- If you have an account, [sign in here](#).
- If you do not have an account, you can [register here](#).
- If you forgot your password, you can [recover it here](#).
- Once an account is created in the SGMA Portal, a local agency, GSA, or watermaster will only have access to the information that it has uploaded, as well as the information available on the public access site.

The SGMA Portal will coordinate DWR's SGMA responsibilities related to the following topics:

- **GSA:** Local agencies can submit their GSA Formation Notification and can make changes to that notification in accordance with [Water Code §10723 et seq.](#) Information will not be posted to the public access site until reviewed for completeness. Additional information is available on DWR's [GSA Website](#).
- **GSP:** GSAs can coordinate to develop one or more groundwater sustainability plans (GSPs) in a basin and can submit information in accordance with [Water Code §10727 et seq.](#) and the [GSP Emergency Regulations](#). Additional information is available on DWR's [GSP Website](#).
- **Alternatives:** Local agencies or GSAs can submit Alternatives as described in [Water Code §10733.6](#). Additional information is available on DWR's [Alternative Submittal Website](#).
- **Adjudicated Areas:** The adjudicated areas listed in [Water Code §10720.8](#) can access information uploaded on April 1, 2016, and submit annual reports. Additional information is available on DWR's [Adjudicated Area Website](#).

If you have questions or comments, please contact the DWR representative identified on the specific SGMA topic. If you have general SGMA questions, please email DWR at [sgmps@water.ca.gov](mailto:sgmps@water.ca.gov).

# SGMA Program – Financial Assistance

Prop 1 Groundwater Grants \$100 Million  
*(First Round Awards)*

## Awards



## Status

- Counties with Stressed Basins
  - March 2016: Awarded \$6.7M to 21 Counties
    - All 21 Counties DACs, at county level geography
  - Agreements executed
  - Work ongoing

# Prop 1 Groundwater Grants \$100 Million

## *(Second Round Proposal Solicitation Package)*

- \$86.3 M Available
  - \$10 M for Severely DAC Projects
  - \$76.3 M for developing Groundwater Sustainability Plans
- Tentative Schedule
  - Released proposal solicitation package (PSP) 9/8/2017
  - Final applications due to DWR 11/13/2017 (an extension has been provided to Counties affected by the Santa Rosa Fires)
  - Accept proposals on a continuous basis
  - Early 2018: Initial Awards
- Eligible Applicants
  - Category 1 SDAC Funding (at least \$10 M)
    - Public Agencies
    - Nonprofit Organizations
      - 501.(c)(3) qualified to do business in California
    - Federally recognized Indian Tribes
    - State Indian Tribes listed on NAHC consultation list
    - Public Utilities
    - Mutual Water Companies
  - Category 2 (no more than \$76.3 M)
    - Public Agencies
      - Limiting to GSAs only

# DWR Contacts & SGMA Resources

## DWR Sacramento:

- *Trevor Joseph*

[Trevor.Joseph@water.ca.gov](mailto:Trevor.Joseph@water.ca.gov)

## SGMA Resources

- DWR SGMP Website

[www.water.ca.gov/groundwater/sgm/index.cfm](http://www.water.ca.gov/groundwater/sgm/index.cfm)

- Subscribe to DWR SGMP Email List

[www.water.ca.gov/groundwater/sgm/subscribe.cfm](http://www.water.ca.gov/groundwater/sgm/subscribe.cfm)

- GIC Interactive Map (water level & subsidence maps)

[www.water.ca.gov/groundwater/MAP\\_APP/index.cfm](http://www.water.ca.gov/groundwater/MAP_APP/index.cfm)

- SGMA Water Management Planning Tool (boundaries map)

Main Page - <http://www.water.ca.gov/groundwater/sgm/>

Interactive map - [www.water.ca.gov/groundwater/boundaries.cfm](http://www.water.ca.gov/groundwater/boundaries.cfm)

## DWR Regional Offices:

